



Measuring the Road Traveled of Minnesota Students

Rachel Vilsack | Agency Performance Manager

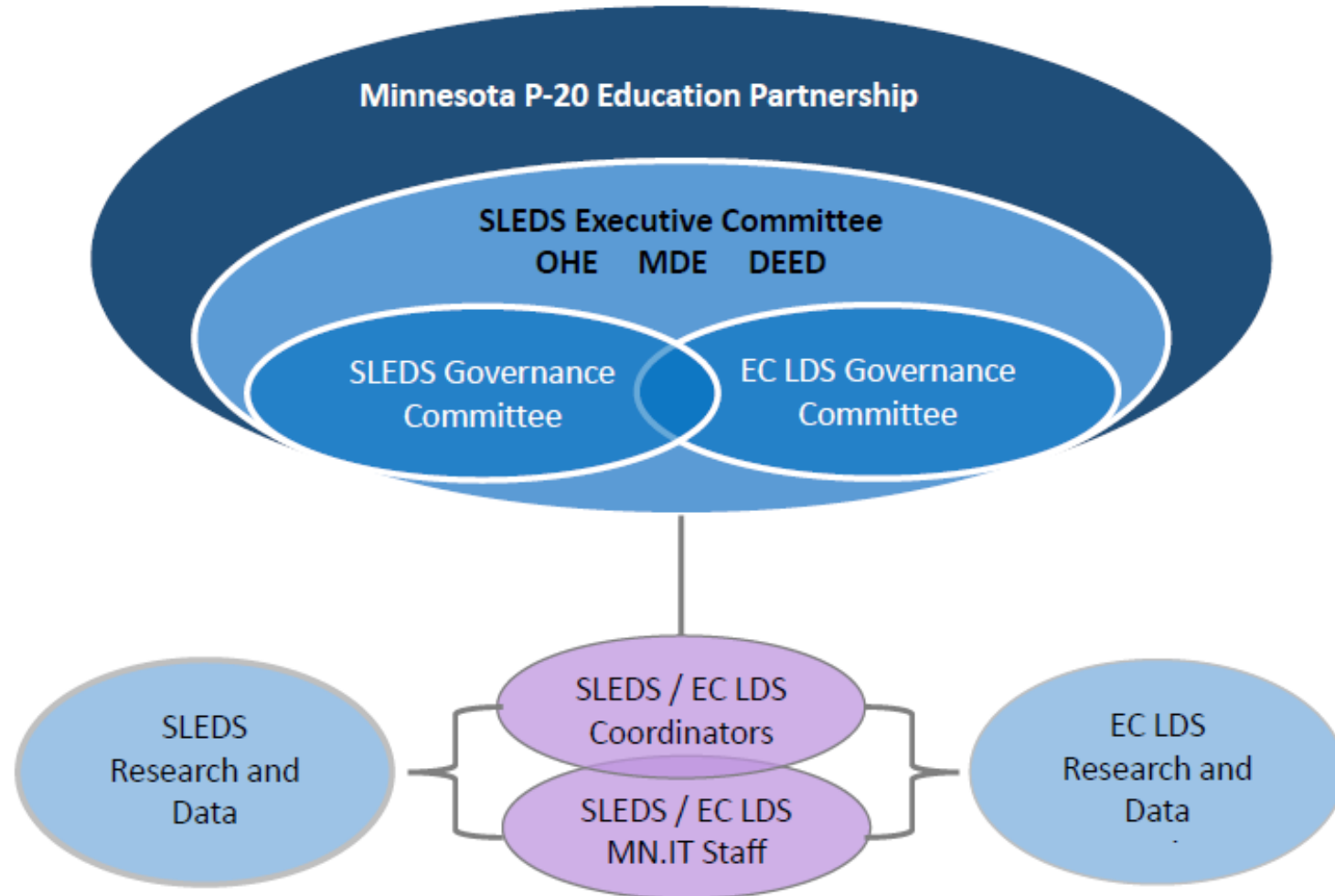
Minnesota Department of Employment & Economic Development

Statewide Longitudinal Education Data System (SLEDS)

- MN Department of Education
- MN Office of Higher Education
- MN Department of Employment & Economic Development



Organizational structure



Guiding principles for data access and management

- ✓ SLEDS will focus on providing cross-sector, linked data and analysis.
- ✓ SLEDS relies on transparency and clarity in all we do.
- ✓ Protecting the privacy of individuals is a priority.
- ✓ Common understanding and use of data increases its value.
- ✓ Data providers, at the state and local levels, are critical sources for understanding and explaining the data.
- ✓ Maintenance of SLEDS and the provision of research and analysis is the responsibility of all data providers.
- ✓ Local partner data provider access is needed for data to drive continuous improvement in local and state level policy.

Brief History of SLEDS

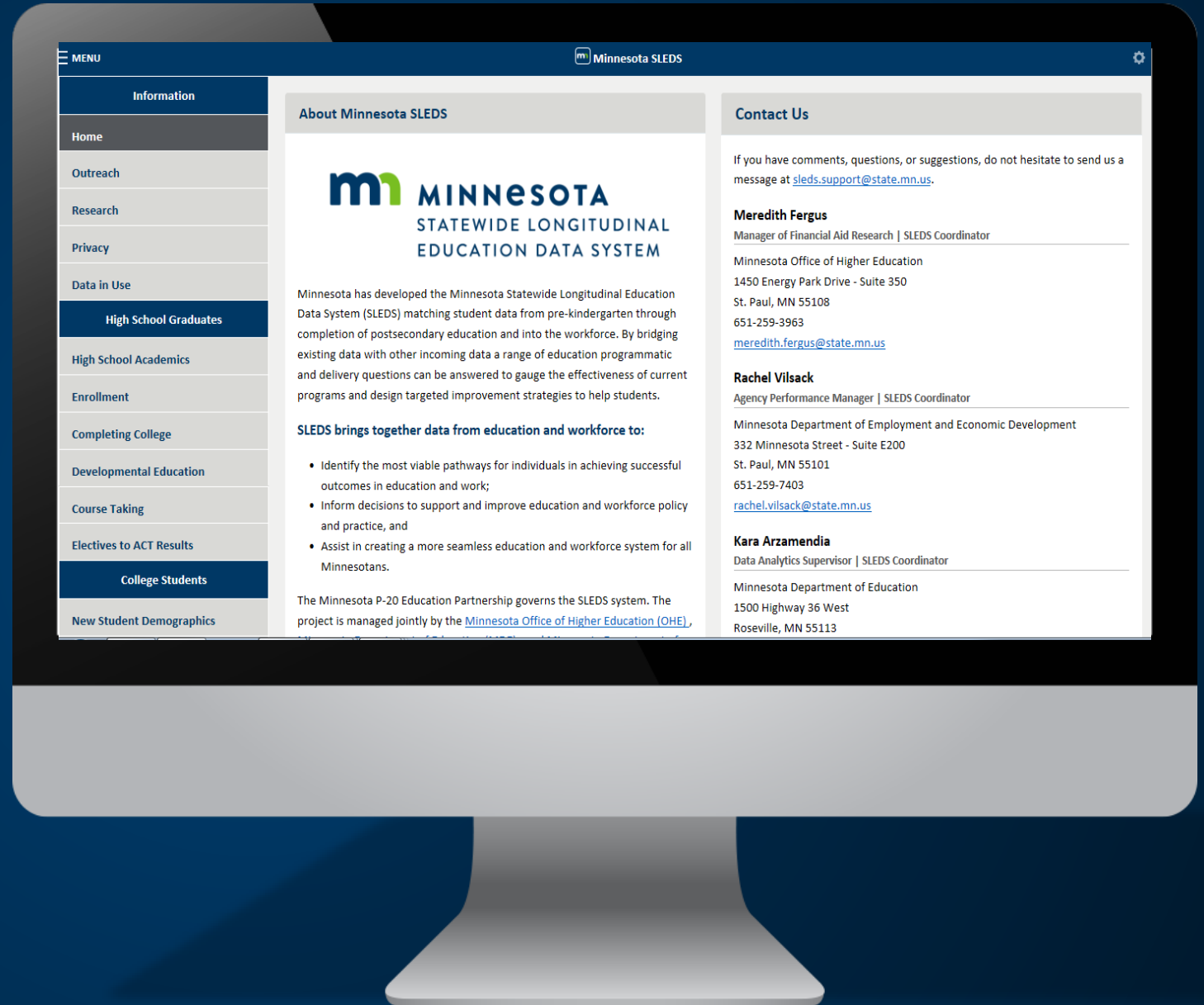
- 2006** Received 1st SLDS grant 2006 – built out K-12 data system
- 2009** Received 2nd SLDS grant – focus on building P-20W system
- 2010** SLEDS adoption by the P-20 Education Partnership
- 2011** Formal data sharing agreements signed
- 2013** Funding approved by the Governor & Legislature; Legislative Authority enacted; Current administrative structure implemented
- 2014** Adoption of *SLEDS Data Access & Management Policy*
Mobile analytics website launches

Brief History of SLEDS (continued)

- 2015** K-12 Secured Reports
Awarded 3rd SLDS Grant – early childhood and college/career focus
- 2016** Early Childhood Longitudinal Data System website launch
Postsecondary Secured Reports; Workforce Training Secured Reports
- 2017** SLEDS Network launched
New partner: MN Department of Health
- 2018** New reports, new data, new partners

sleds.mn.gov

- ✓ Analytics reports
- ✓ Research
- ✓ Privacy
- ✓ Data in Use
- ✓ Outreach



Why link K-12 and workforce data?

- How effectively are education programs preparing students for the workforce?
- What are the employment patterns and workforce outcomes of recent high school graduates (who do not continue to postsecondary education) during the years after graduation?
- Are work-based learning opportunities (e.g., apprenticeship, internship) for high school students aligned with industry needs?
- How do workforce outcomes vary for high school students who participated in different work-based learning opportunities?
- What are the workforce outcomes of high school non-completers or adult learners?

How to link K-12 and workforce data?

- K-12 record can link to a person's workforce record only indirectly through a bridge match, like the presence of a higher education record.
- Need to find one or more identifiers to link across the K-12 and workforce data systems.

Rule Number	Rule Description	Order Number
1	New Record	1
1.5	FullName_Fuzzy, DateofBirth_Fuzzy, SSN_Exact	2
1.6	LastName_Fuzzy, DateofBirth_Fuzzy, SSN_Exact	3
1.7	FirstName_Fuzzy, DateofBirth_Fuzzy, SSN_Exact	4
1.1	MARSS#_Exact, FullName_Fuzzy, DateofBirth_Fuzzy	5
1.2	MARSS#_Exact, LastName_Fuzzy, DateofBirth_Fuzzy	6
1.3	MARSS#_Exact, FirstName_Fuzzy, DateofBirth_Fuzzy	7
1.8	FullName_Fuzzy, SSN_Exact	8
1.4	MARSS#_Exact, FullName_Fuzzy	9
1.11.1	LastName_Exact, FirstName_Fuzzy, DateofBirth_Exact, SSN_NULL_OR_Match_90%_or_more_to_other_SSN	10
1.12.1	LastName_Fuzzy, FirstName_Exact, DateofBirth_Exact, SSN_NULL_OR_Match_90%_or_more_to_other_SSN	11
1.11.2	LastName_Exact, FirstName_Fuzzy, DateofBirth_Exact, MARSS_NULL_OR_Match_90%_or_more_to_other_MARSS	12
1.12.2	LastName_Fuzzy, FirstName_Exact, DateofBirth_Exact, MARSS_NULL_OR_Match_90%_or_more_to_other_MARSS	13
1.9	LastName_FirstName_Exact, DateofBirth_Exact	14
1.10	FirstName_LastName_Exact, DateofBirth_Exact Against LastName_FirstName_Exact, DateofBirth_Exact	15
1.13	LastName and DateofBirth are Exact and FirstName using NameGroup	16
1.14	Exact Match on SSN and FirstName	17

What's unique about Minnesota's story

- Leveraged driver's license data to get the date of birth and gender variables added to our wage records.
 - 90% of wage records had a DMV match.
 - Person-linking rate of K-12 enrollment to workforce data doubled.
- The argument for data sharing was framed differently than a desire to better link data to study workforce outcomes of high school students.
 - [Quarterly Employment Demographics \(QED\)](#)

Our first look at the data

High School to Employment Mobile Analytics Report

- How many high school graduates – who don't go on to college in the first year after graduation – are working in Minnesota?
- What is the quality of their employment – hours worked and wages paid?
- What industries do graduates work in?

Data available: 2009-2015 at school district and regional level

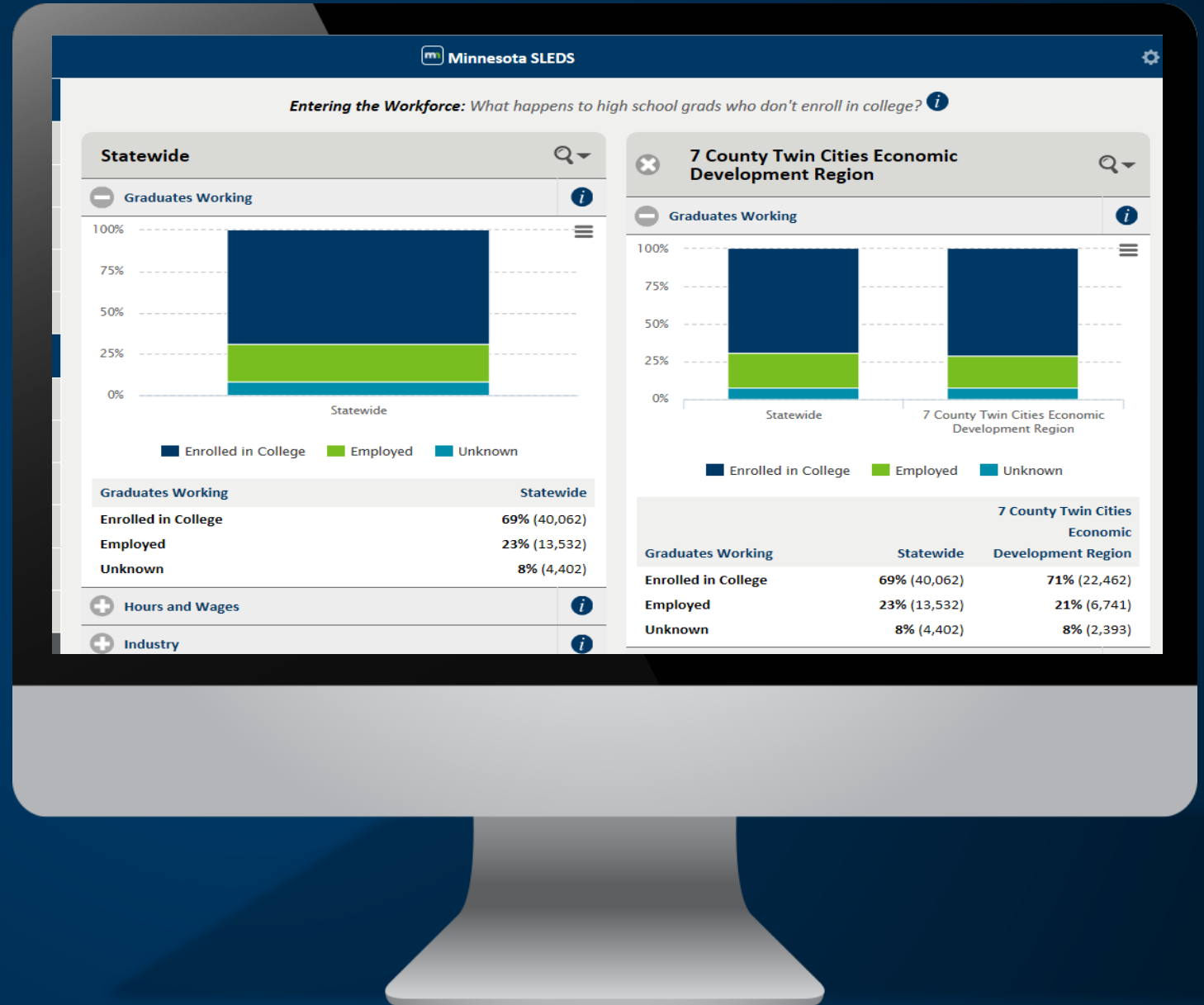
Filters: Gender, race/ethnicity; free/reduced price lunch; special education

<http://sleds.mn.gov/#HSGraduatesToEmployment>

Entering the Workforce

In 2015:

- ✓ 69% grads enroll in college
- ✓ 23% employed
- ✓ 8% unknown



What's happening locally?

- Rochester, MN – Cradle to Career Network
 - How many high school students work during the summer and in what industries?
 - How many Rochester public high school graduates stay in, or return to, the Rochester area for employment after college?
- Bloomington Public Schools – College and Career Academy ROI
 - Quasi-experimental research design to assess ROI for student, school district and taxpayers.
- Achieve Minneapolis/STEP-UP – Impact Evaluation
 - Assess how this program creates “a more diverse and skilled workforce in entry-level professional careers, particularly in the targeted pipeline areas”.



What's Next

What's on our “to do” list ?

SLEDS System

- Impact of planning on career and college outcomes
- Build out employment variables on K-12 and postsecondary secured reports
- Entering the workforce report 2.0

DEED

- Statewide analysis and visualization of student migration patterns – high school, college and employment
- Use our workforce data mart to evaluate state-funded youth employment program

Thank you!

Rachel Vilsack

rachel.vilsack@state.mn.us

651-259-7403