

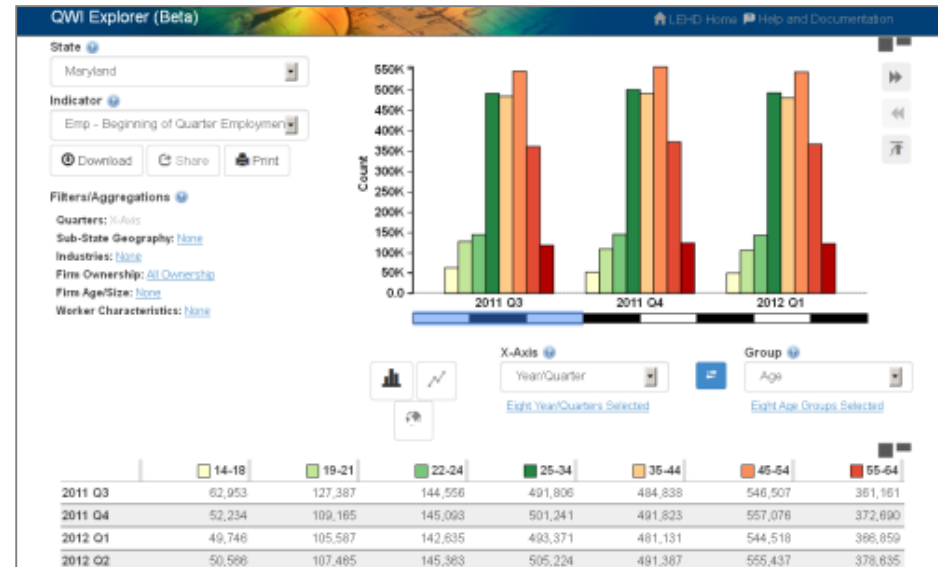
Introducing QWI Explorer!

Unlocking the Powerful Labor-force Information
of the Quarterly Workforce Indicators

Heath Hayward
Geographer
LEHD Program
April 16, 2014

What is QWI Explorer?

- New analysis tool for accessing the Quarterly Workforce Indicators (QWI) dataset
- Beta release makes all 32 indicators available in a pivot chart/table interface
- Compare, rank, and aggregate QWIs by time, geography, and firm and worker characteristics on the fly
- Companion application to the raw data outputs from the LED Extraction Tool



Why are QWIs Important?

- Indicators on Employment, Employment Change (Firm and Individual), and Earnings
- Detailed Firm Characteristics (geography, industry, age, size)
- Detailed Worker Demographics (sex, age, education, race, ethnicity)
- 3 Quarter lag, coverage varies by state
- Used by economic developers, urban planners, policy analysts, workforce researchers, and academics



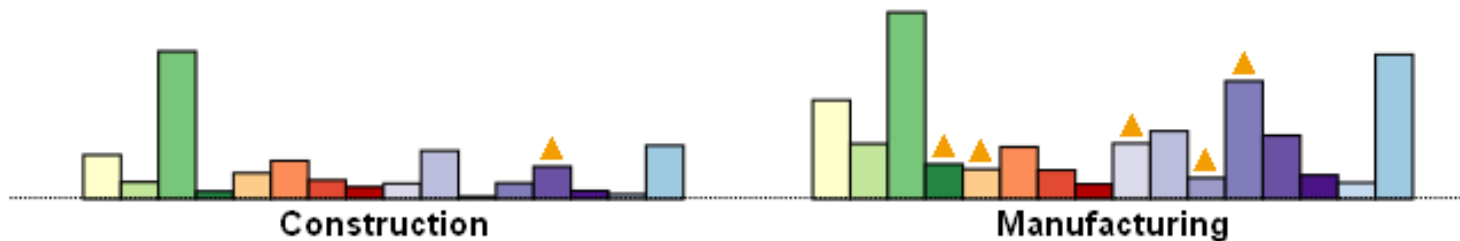
Why Build This Tool?

- Feedback from users!
- Make entire set of QWIs available (32 indicators for 50 partner states) in an intuitive analysis tool
- Allow users to fully explore the detailed interactions between workers and firms via interactive tables, charts, and maps
- Broaden the user base for QWIs by making these complex data more accessible
- Replace the QWI Online and Industry Focus applications with a more useful and more modern web tool


	Agriculture, Forestry, Fishing and Hunting	Mining, Quarrying, and Oil and Gas Extraction
Androscoggin, ME	540	
Aroostook, ME	2,138	
Cumberland, ME	442	42
Franklin, ME	217	

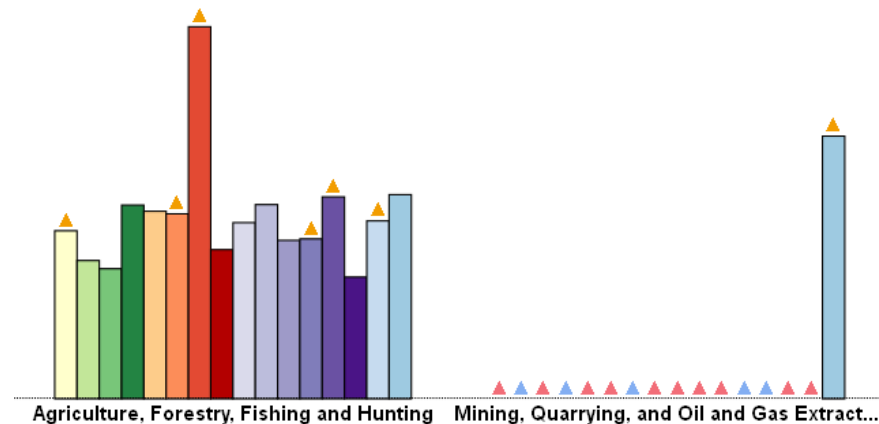
Application Design Goals

- Simple, clean, flat interface
- Display an interactive table that is linked to an interactive chart/map
- Allow users to build the exact data combinations/comparisons needed to analyze their workforce question
- Provide useful and beautiful exports
- Make contextual help and documentation readily available



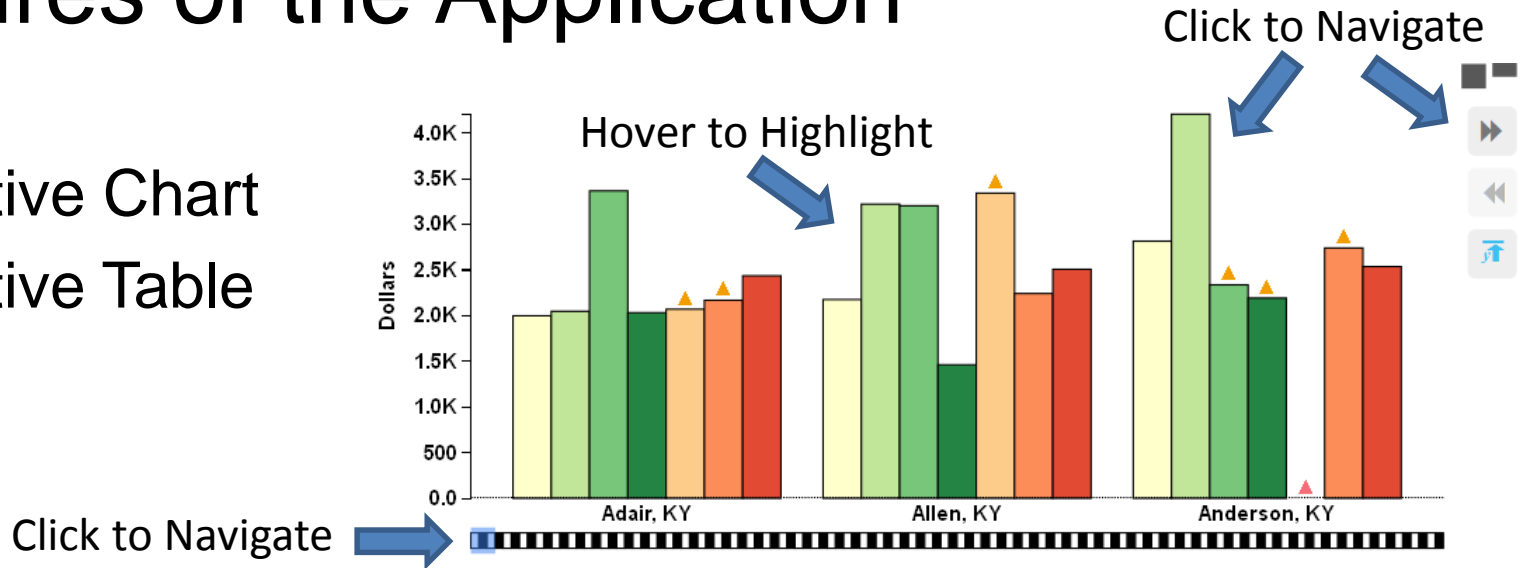
Under the Hood

- 7 TB database - 49 States plus DC (MA coming soon)
- Refreshed every quarter – Rolling production
- No downtime for users – States are loaded at midnight, check  icon for states currently being loaded.



Features of the Application

- Interactive Chart
- Interactive Table



Click to Sort

	Construction	Manufacturing	Wholesale Trade	Retail Trade	Transportation and Warehousing	Information	Finance and Insurance
Adair, KY	1,999	2,048	3,367	2,033	2,071	2,169	2,437
Allen, KY	2,177	3,222	3,204	1,462	3,342	2,243	2,508
Anderson, KY	2,816	4,207	2,338	2,193	2,741	2,741	2,538
Ballard, KY	5,032	4,337	2,297	1,748	2,864	2,864	2,574
Barren, KY	2,685	2,997	3,415	1,804	2,526	2,783	3,524
Bath, KY	2,787	3,183	1,428	1,428	2,639	2,639	2,639
Bell, KY	2,974	2,428	4,702	1,638	1,920	1,595	2,887
Boone, KY	2,831	3,960	3,475	1,803	3,189	3,713	3,353
Bourbon, KY	2,228	3,558	4,262	2,100	3,097	2,705	3,995
Boyd, KY	3,027	5,137	4,052	1,758	3,340	2,239	2,817

Hover to Highlight

Click to Navigate

Features of the Application

- X-Axis – Control the Rows of Table, X-Axis of Chart
- Group – Control the Columns Table, Groupings of Chart
- Filters – Refine Analysis by One Characteristic
- Aggregations – Select more than One Characteristic to Create Sums/Averages

Filters/Aggregations ⓘ

Average of Quarters: [2013 Q1 - 2012 Q2](#)

Sub-State Geography: [Group](#)

Industries: [X-Axis](#)

Firm Ownership: [All Ownership](#)

Firm Age/Size: [None](#)

Worker Sex: [Female](#)

X-Axis ⓘ



Group ⓘ

[20 NAICS Sectors Selected](#)

[16 Counties Selected](#)

Live Demo!

<http://qwiexplorer.ces.census.gov>

Application Constraints

The following constraints exist in the QWI Explorer:

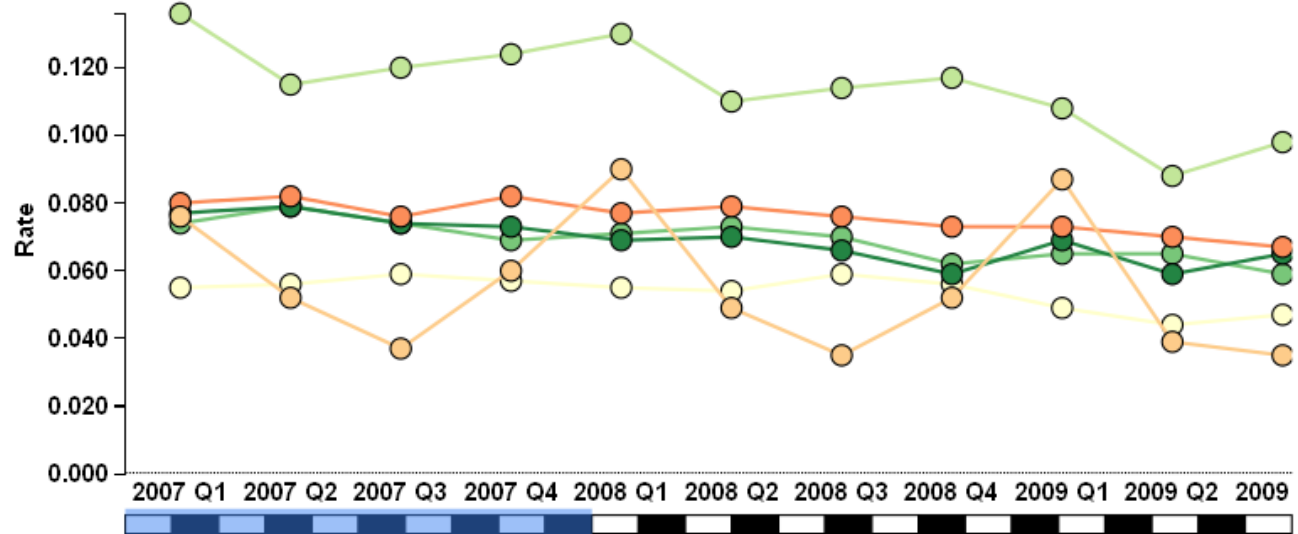
- Only one State and one Indicator can be selected at a time.
- Up to 25 Group elements can be displayed in the Bar Chart at a time.
- Up to 10,000 table cells in the QWI database can be accessed at a time. Larger queries are required to use the LED Extraction Tool.
- Settings Conflict Popups appear when incompatible settings need to be resolved.

*The **Bar Chart** can handle up to 25 **Group** elements selected at a time. If more than 25 elements are selected, only the first ten and last ten elements are shown in the chart, separated by an axis break symbol. There are no such **Group** limitations for the data shown in the table.*

 [Close](#)

Functionality In Development

- Line Charts
- Thematic Maps
- Improved and Additional Exports
- Group by Indicator
- Bug Fixes
- Bubble Motion Chart?



Tentative Release Schedule

4/14/2014 – Beta release of QWI Explorer (bar chart only)

9/2014 – Release version 1.0 (line charts, thematic maps, improved exports, bug fixes)

12/2014 – Release version 1.1 (additional bug fixes, bubble motion charts?)

Thank You!

- Please submit feedback to CES.QWI.Feedback@census.gov
- Questions?